

Recycling and Waste Services for Somerset



Somerset Waste Partnership manages waste and recycling services on behalf of Mendip, Sedgemoor, South Somerset and West Somerset District Councils, Taunton Deane Borough Council and Somerset County Council.

January 2012

Sort It Plus Kerbside Collections

Sort It Plus collections are provided to suitable households in all Somerset districts with weekly recycling and food waste, picked up on the same vehicle, and fortnightly refuse.

See our website - www.somersetwaste.gov.uk - for links to check your collection days and bank holiday changes or see back page for contacts to ask customer services.

Your recycling and refuse should be out by **7am** on collection days, at the front edge of your property where it can be easily seen. Please be careful not to obstruct pavements or roads.

Weekly Food Waste Collections

An external small bin, with lockable lid, and kitchen caddy are provided for food waste.

Use newspaper to wrap food waste or line your caddy, or buy special 'compostable' liners, certified with 'looped seedling' logo. For more advice, see our website or ask customer services.

Do not line caddies with plastic bags, even biodegradable ones, as they will not break down when composted and so will not be collected.



Yes, please:	No, thanks:
<ul style="list-style-type: none"> • All cooked and raw food • Fruit and vegetables • Meat and fish • Cheese and egg shells • Bread, pasta, cereal • Tea bags, coffee grounds • Paper kitchen towel 	<ul style="list-style-type: none"> • Plastic • Garden Waste • Any other household waste

Weekly Recycling Collections

Two recycling boxes are provided.

It helps collectors if materials are kept separate in boxes.

Cardboard needs to be flattened and can be put in other cardboard boxes - large amounts should be taken to recycling sites.

Cans and plastic bottles can be put out mixed in same box.

You can use one box if that's all you need.

Box 1

Paper - newspapers, magazines, leaflets, directories, white envelopes and other white paper.

Glass bottles and jars - rinsed and not broken; no table or cook ware.

Foil - bagged and alu foil only - use the scrunch test: scrunch up and if it stays scrunched it can be recycled.



Box 2

Food and drinks cans - rinsed and squashed if possible.

Plastic bottles - no tops, please rinse; no pots, tubs, trays or film.

Cardboard - brown corrugated, grey card, greetings cards and brown envelopes; flattened; take large quantities to recycling sites.



On top or alongside boxes

Clothes - in bags (not black sacks) to keep dry and avoid putting out on wet days.

Shoes - tied in pairs and bagged.

Car batteries - one per collection.

Fortnightly Refuse Collections

Domestic refuse is collected fortnightly.

A wheeled bin is provided to those living in houses with space for their storage and collection. The lid should be closed and only refuse inside the bin will be collected. Additional refuse alongside or on top of your bin will not be taken.



If your property is unsuitable for a wheeled bin, up to 4 sacks of refuse will be accepted each collection.



Accepted:	Not accepted:
<p>Household waste which is not collected for recycling or composting, such as:</p> <ul style="list-style-type: none"> • Plastic pots, tubs, trays and film; • Vacuum cleaner contents. • Cat, dog or other pet litter. • Disposable nappies (save waste and money by using cloth nappies - see our website). 	<ul style="list-style-type: none"> • Food waste and recyclable materials accepted by other collection services; • Garden waste; • Hot ash (leave to cool); • Rubble, earth and stones; • Hypodermics (see clinical); • Bulky household items; • Engine oil, paint or other chemicals; • Business or commercial waste.

Garden Waste Collections

There is a charge for fortnightly garden waste collections. For details and to place an order, please contact your district council (see back page).

Garden waste will only be collected if contained inside the special wheeled bins or paper sacks ordered. Wheeled bin lids should be closed.



Yes, please	No, thanks
<ul style="list-style-type: none">• Flowers, plants, grass & weeds• Straw or sawdust• Hedge prunings (not more than 10cm or 4" thick)	<ul style="list-style-type: none">• Plastic• Metal• Glass• Cat & Dog litter

Household Batteries

Supermarkets and many shops that sell batteries have drop off containers where you can take them for recycling.

Home Composting



Home composting is the best option for garden and some food waste. It saves money and has most environmental benefits. Somerset Waste Partnership promotes home composting through reduced price compost bin offers.

See www.somersetwaste.gov.uk for details.

Assisted Collections*

This free service is for people who have mobility difficulties or an impairment which means they cannot carry their containers to the kerbside and there is no-one in the household who can assist them. Containers will be collected from an agreed external point on the property, emptied and returned.

Bulky Waste Collections*

If you have bulky items like furniture or domestic appliances that are not suitable for reuse and you can't take to a Recycling Centre, you can arrange a bulky waste collection. This is a charged service based on the number of items being collected.

Clinical Waste Collections*

Some people need to use clinical materials like dressings and syringes on a regular basis. If you regularly have clinical waste contact customer services (see back page) and we will consider whether you need free clinical waste collections.

*** To request any of these services please contact customer services at your district council (see back page).**

Blocks of Flats

These normally have large shared bins for recycling and refuse.

If you prefer to have individual collections using recycling boxes and food waste bins you can contact us to request this. You will need a suitable collection point that can be seen and easily accessed from the road.

Recycling Sites



Somerset Waste Partnership provides fourteen Recycling Centres (RC) and four Community Recycling Sites (CRS).

Sites accept a wide range of household items, including bulky and hazardous waste.

Mendip		Hours
Coleford CRS*	Newbury Lane BA3 5RU	A
Dulcote RC	Dulcote Hill BA5 3PZ	B
Frome RC	Manor Road BA11 4RN	B
Street RC	Farm Lane (A39) BA16 9PB	A
Sedgemoor		Hours
Bridgwater RC	Saltlands Avenue TA6 3JG	B
Cheddar RC	Wedmore Road BS27 3EB	A
Highbridge RC	Isleport Business Pk TA9 4PW	B
Middlezoy CRS*	Greylake (off A361) TA7 9BP	A
South Somerset		Hours
Castle Cary RC	Dimmer Lane BA7 7NR	A
Chard RC	Beeching Close TA20 1BB	B
Crewkerne CRS*	Blacknell Ln Ind Est TA18 7HE	A
Somerton RC	Bancombe Rd Estate TA11 6SB	B
Yeovil RC	Artillery Road, BA22 8RP	B

Taunton Deane		Hours
Taunton RC	Crown Industrial Est. TA2 8QY	B
Wellington RC	Poole Brickworks TA21 9HW	A
West Somerset		Hours
Dulverton CRS*	Brushford Road TA22 9AA	A
Minehead RC	Mart Road Ind. Estate TA24 5BJ	B
Williton RC	Roughmoor Ind. Estate TA4 4RA	A
* CRS: Community Recycling Site - £2 entry fee.		

Opening Hours (from 8am)					
Hours	Mon	Tue-Wed	Thu-Fri	Sat	Sun
A	8-7pm	8-4pm	Closed	8-4pm	8-1pm
B	8-7pm	Closed	8-4pm	8-4pm	8-1pm
Closed Christmas Day, Boxing Day and New Year's Day.					

Important guidance for site users

Material charges apply to the following materials (which are not defined as household waste): hardcore, soil, gas bottles and tyres - see overleaf for full details.

Please sort your waste into different materials for recycling and deposit in correct containers - see overleaf for list of items and materials recycled at sites.

Asbestos (keep whole, use gloves and mask and double wrap for safe disposal) and **plasterboard** are only accepted at following sites: Bridgwater, Frome, Highbridge, Minehead (asbestos only), Street, Taunton, Williton (plasterboard only) and Yeovil.

Recycling Centres and Sites - Materials Recycled

Batteries (car & household)	Fridges & freezers	Oil - engine oil
Books **	Garden waste	Paper
Cans (drink & food)	Glass bottles & jars	Plastic bottles ****
Cardboard	Low-energy light bulbs	Scrap metal
Carrier bags	Mobile phones	Shoes
Drink/liquid cartons *	Music & movies (good quality CDs, DVDs, videos for BHF) **	Textiles
Electrical appliances	Oil - cooking oil ***	Toner cartridges
Fluorescent tubes		Window glass *****
		Wood

* Cartons (inc. Tetrapak) only at: Bridgwater, Chard, Crewkerne, Dulcote, Frome, Highbridge, Minehead, Street, Taunton, Wellington, Williton & Yeovil.

** Book and music banks for BHF at: Coleford, Dulcote, Street & Somerton.

*** Cooking oil only at: Bridgwater, Highbridge, Taunton & Wellington.

**** Plastic bottles at all sites except: Cheddar.

***** Window glass only at: Bridgwater, Chard, Taunton, Wellington & Yeovil.

Material Charges – Payment preferred by cash or cheque. Credit or debit cards are also currently accepted. Receipts will be issued.

Gas Bottles	£6.00	per bottle (below 10kg)
	£12.00	per bottle (10 - 20kg)
	£35.00	per bottle (specialist cylinders)
Soil & Hardcore Stone, rubble, clay and similar construction materials. Also ceramic and porcelain sinks, tiles and toilets*.	£2.90	per rubble sack and min. charge
	£14.50	small van or trailer (to 250kg**)
	£29.00	medium van or trailer (to 500kg**)
	£58.00	large van or trailer (to 1 tonne**)
Car Tyres	£3.30	per un-rimmed tyre
	£4.20	per rimmed tyre
	£45.60	per large (e.g. lorry size) size

* There is no charge for crockery or clay flower pots, although we ask that these are put in hardcore skips. ** Estimated carrying capacity.

Cut Down Waste

To save money and help the environment one of the simplest and best things to do is cut down on waste. There are many easy ways to do this.

Cut out junk mail - Join the mailing preference service on www.mpsonline.org.uk or by calling 0845 703 4599. It only takes a few moments and cuts out piles of unwanted mail.

Reduce food waste - Look for tasty recipes for using up leftover food; think about portion sizes; shop for what you need. These are just a few of the simple, easy ideas from www.lovefoodhatewaste.com.

Reusable nappies - Stylish and save money see www.somersetwaste.gov.uk or ask for leaflet on 01823 625700.

Reuse - Pass It On

In Somerset it's easy to find new homes for unwanted items:

- Give to others at www.uk.freecycle.org or ilovefreecycle.org
- Remember your local charity shop
- Make a little money at a car boot sale or online auction.

The following Furniture Reuse Groups can collect unwanted items and sell them at low cost to households on low incomes:

FurnEquip (Frome) - 01373 467320

FurnEquip (Glastonbury) - 01458 831188

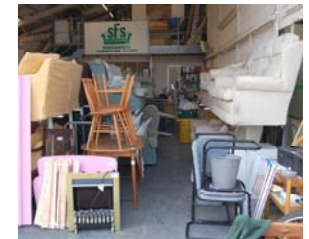
FurniCare (Chard) - 01460 68221

FurniCare (Yeovil) - 01935 433416

FurniTrust (Taunton) - 01823 253053

Sedgemoor Furniture Store (Bridgwater) - 01278 425055

Engage Furniture Reuse Project (Minehead) - 01643 707484



Education - Carymoor Environmental Trust

Somerset Waste Partnership has worked with the Carymoor Environmental Trust since 2002. Their outreach education team provide class-room activities both in schools and at the Carymoor Environmental Centre, including tours of a working landfill site at Dimmer, near Castle Cary. Carymoor offer environmental education for primary and secondary schools, after schools clubs, INSET training and school grounds advice.

For more information on Carymoor environmental education services visit www.carymoor.org.uk or call 01963 351350.

End Use Register

Do you wonder what happens to your recycling after it has been collected? Somerset Waste Partnership were the first in the UK to produce a full End Use Register, showing every year exactly where your recycling ends up and how it is used.

Visit www.somersetwaste.gov.uk to download a copy.

Somerset Waste Partnership Online

Our website is your first port of call for information about our services, including bad weather updates and things you can do to make a real difference in cutting waste.

For free bimonthly e-bulletins with updates on our services, waste news and tips to help you cut down on waste sign up for our SORTED e-news bulletins at www.somersetwaste.gov.uk.

See our movies on You Tube and for the quickest updates and much more follow us on Facebook or Twitter. All can be accessed from our website.

www.somersetwaste.gov.uk

For collection enquiries contact your local council:

Mendip District Council - Customer Services
T: 01749 648999 E: customerservices@mendip.gov.uk

Sedgemoor District Council - Customer Services
T: 0845 4082543 E: customer.services@sedgemoor.gov.uk

South Somerset District Council - Customer Services
T: 01935 462462 E: ssdc@southsomerset.gov.uk

Taunton Deane Borough Council - Customer Services
T: 01823 356346 E: enquiries@tauntondeane.gov.uk

West Somerset District Council - Customer Services
T: 01643 703704 E: customerservices@westsomerset.gov.uk

For enquiries on Recycling Centres contact:

Somerset County Council - Somerset Direct
T: 0845 3459188 E: somersetdirect@somerset.gov.uk

For further information on household waste and advice on business waste recycling visit:

www.somersetwaste.gov.uk



If you need this information in large print, Braille, audio or another language please contact 01823 625700



Printed on Recycled Paper