

Treatment

West Somerset Council provides a charged service for treatment of pests in domestic premises.

	Price (£)
Wasp nests	£39.00

* Prices correct at time of printing

West Somerset Council also have a service for

- Squirrels in houses
- Rats
- Mice
- Cockroaches
- Flies
- Fleas
- Bedbugs

Should you wish to use this service please Customer Services to request an appointment.

Commercial rates can be obtained directly from the contractor SDK Kilsyth Limited on 0845 757 3268 (local call rate)

Further Information

Somerset Beekeepers Association
www.somersetbeekeepers.org.uk

British Beekeepers Association
www.britishbee.org.uk
Tel: 02476 696679
Fax: 02476 690682

Department for Environment, Food and Rural Affairs
(DEFRA)
www.defra.gov.uk
Tel: 08459 33 55 77

HOW TO CONTACT THE COUNCIL

FOR ALL ENQUIRIES

Telephone

01643 703704

Telephone hours

8.30am - 5.00pm Monday to Friday
(Your call may be recorded)

Emergency

Careline 0800 0831404 (5.00pm-8.30am)

Email

customerservices@westsomerset.gov.uk

Website

www.westsomersetonline.gov.uk

Minehead Customer Centre

1-3 Summerland Road, Minehead, Somerset TA24 5BP
Monday - Friday 9.00am - 5.00pm

Williton Office

West Somerset House, Killick Way, Williton,
Taunton, Somerset TA4 4QA
Monday - Thursday 8.30am - 5.00pm
Friday 8.30am - 4.30pm



Information & Advice

Wasps & Bees



This document can be made available in large print, Braille, tape format or in other languages upon request



Wasps

Wasps have black and yellow bands and a narrow waist in the middle of the body.

Wasps can vary in size, a 'worker' is typically 15mm long to a 'Queen' which is 20mm long.

Only the female wasps have the needle-like sting and is concealed near the tip of the abdomen.

There are several species of wasp in the UK but the most abundant and widely distributed are the Common wasp and the German wasp.

Lifecycle

The Queen wasp emerges from the nest in the autumn, and after mating selects a suitable site for hibernation.

Late the following spring the hibernation ends and the surviving queen selects a nest site.

The nest is usually located in the ground or in the cavities in trees, walls or buildings. Frequently this is the roof space of a house or in a wooden garden shed. The nest is built up from wood pulp which is moulded into the outer shell of the nest and contains many internal chambers.

The Queen lays an egg in each of the chambers and these hatch into larvae which are fed by the Queen on dead insects. When fully grown the larvae pupate and from pupae workers emerge. These workers assist in rearing new larvae and the new Queens.

Towards the end of the summer the Queen lays a number of eggs which produce male wasps and these mate with the new Queens. The Queens hibernate in the winter, the workers die in the cold weather.

Old nests are not re-used the following year, although a new nest may be established next to an existing nest. Therefore it is not necessary to remove an old nest.

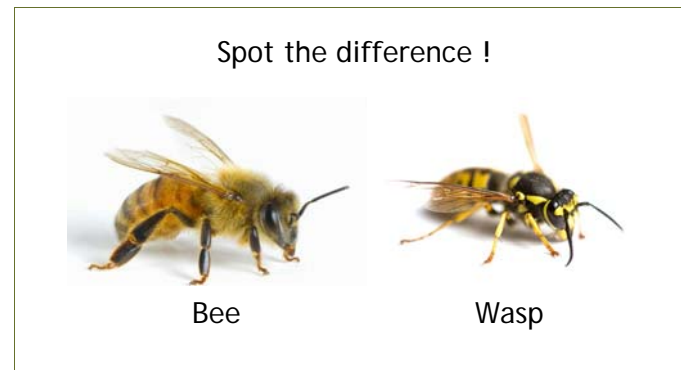
Control

It may be necessary to treat wasp nests which pose a particular danger to you or your family. Unless such a danger exists, the nests are best left undisturbed.

Where necessary, you can treat wasp nests yourself - although extreme care should be taken when doing so. This can be done through the application of insecticide dust at the entrance to the nest. This should be preferably done after dusk when the nest is less active.

Insecticide dust is available from most DIY stores and garden centres. You should ensure that the product you buy is specially intended for wasps and the directions on the product label must be followed carefully.

We do recommend that a professional pest contractor is commissioned to carry out the treatment of a wasp nest. They are the experts and will be able to offer advice as well as treatment.



Bees

There are over 300 different species of bee in the UK and bees have been present in Britain for about 30 million years.

Bees do look similar to wasps, they have the same characteristic black and yellow stripe colouring. A honey bee has hairy black and yellow bands on a narrow waist and a very hairy yellow upper body. A bumble bee is rounder, is very hairy all over its body and has thick black and yellow bands of colouring.

Like the Queen wasp, a Queen bee is bigger than the other 'worker' bees. She can be spotted by her shiny thorax (upper body). There are only a few male bees in a hive, they are fatter than the worker bees and have a squarer end to their body. The males sole job is to mate with the new Queens.

Many flowers depend on pollination to reproduce, bees act as pollinators, spreading pollen from one flower to the next. Bees eat pollen so plants ensure that enough is produced to spread to the next plant. Bees only forage from one type of plant at a time so they are the most effective at spreading the right sort of pollen to the specific kind of plants.

Due to falling numbers in the bee population, it is recommended to save and relocate a swarm rather than to destroy it.

The Somerset branch of Beekeepers are always on hand to give advice and where necessary remove a swarm. However, Beekeepers will only collect bees from accessible places and a charge may be made to cover their expenses.

The Council has many contacts in the Beekeepers Association, please contact us and we will put you in touch with the nearest beekeeper to you.